

ONE BEDROOM
 1 FULL BATHROOM
 550 to 600 SQUARE FEET

Features:

Ultra-Sustainable Passive House Design

High Ceilings

Advanced Climate Control

Purified Air

European Appliances

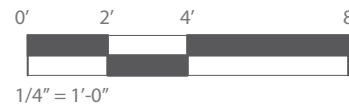
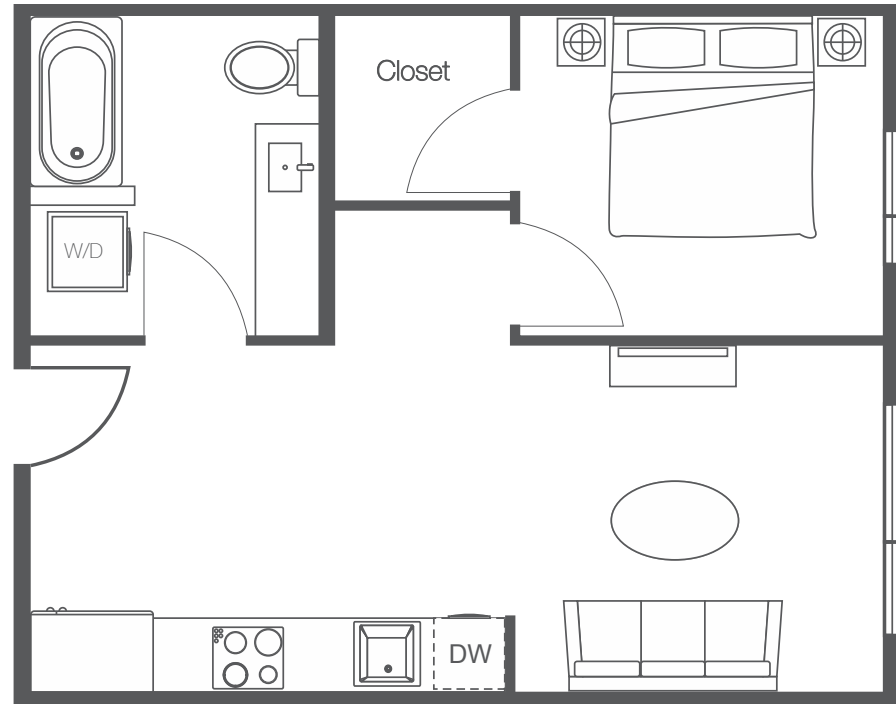
LIVE SOLIS.COM

SOLTERRA

SOLTERRA.COM

X06 FLOOR PLAN

1300 East Pike Street | Seattle, WA



NORTH

