

ONE BEDROOM  
1 FULL BATHROOM  
725 SQUARE FEET

Features:

Ultra-Sustainable Passive House Design

High Ceilings

Advanced Climate Control

Purified Air

European Appliances

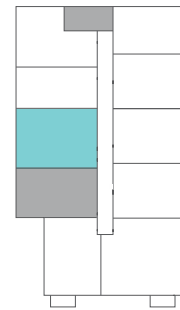
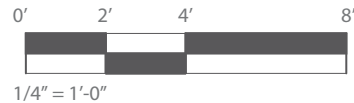
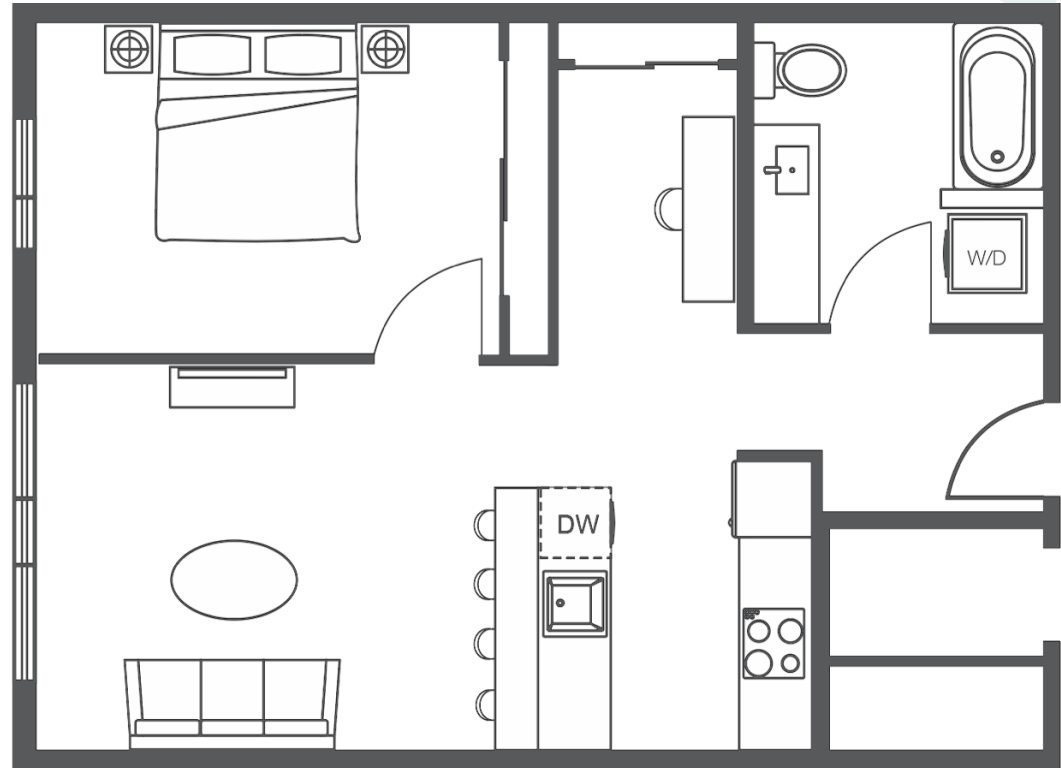
[LIVE SOLIS.COM](http://LIVESOLIS.COM)

SOLTERRA

[SOLTERRA.COM](http://SOLTERRA.COM)

## X01 FLOOR PLAN

1300 East Pike Street | Seattle, WA



# SOLIS

CAPITOL HILL

ONE BEDROOM  
1 FULL BATHROOM  
725 SQUARE FEET

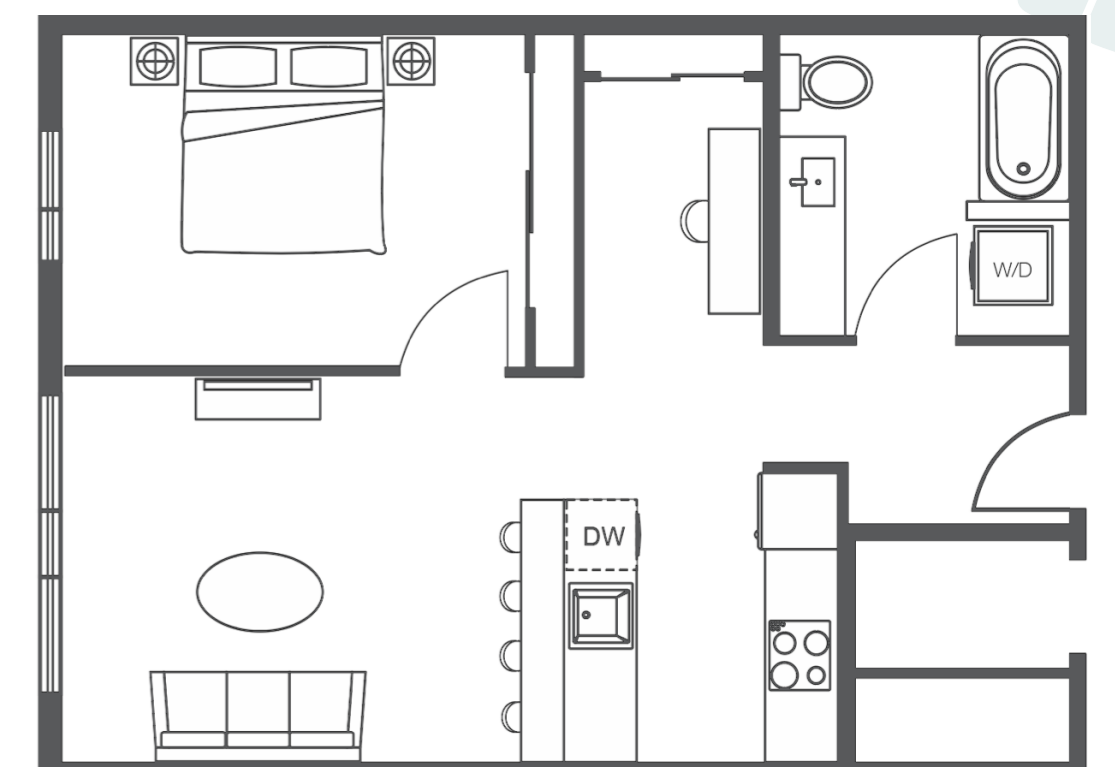
- Features:
- Ultra-Sustainable Passive House Design
  - High Ceilings
  - Advanced Climate Control
  - Purified Air
  - European Appliances

[LIVE SOLIS.COM](http://LIVESOLIS.COM)

SOLTERRA

[SOLTERRA.COM](http://SOLTERRA.COM)

**X01 FLOOR PLAN**  
1300 East Pike Street | Seattle, WA



0' 2' 4' 8'  
1/4" = 1'-0"

NORTH

